

# M4

## MULTI-PURPOSE KITCHEN MACHINE



■  
30+ servings  
per day

■  
Gastronomy

■  
Hotels

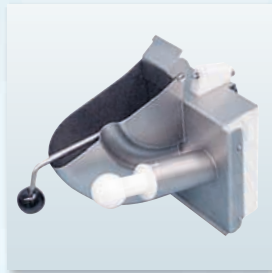
■  
Catering services

■  
Party services

■  
Diet kitchens



GN-containers to put under



XXL filling chute as depot  
for processing large volumes  
in one step



60 degree rotatable drive  
to straining and pureeing



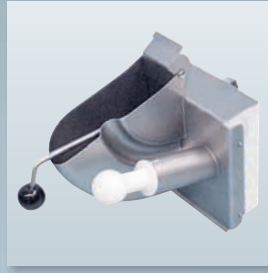
Easy-to-use coupling system  
for change of attachments

- Modular building concept, easy to use
- Multi-purpose use: Chopping, shredding, grating, straining, pureeing, stirring, beating, kneading, cutting, steaking, tenderizing
- Safety switch-off with coded magnet
- Perfect combination of bowl and machine body by bayonet
- 15 l XXL-Bowl
- Cleaned housing

## SELECTION OF ACCESSORIES



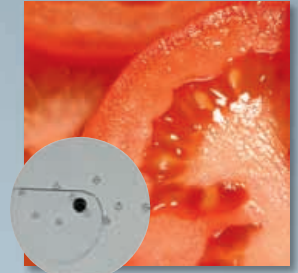
Universal basic unit  
561 000 0311\*



Cutting attachment  
including switched  
pressure flap control and  
pusher 104 018 000\*  
Attention: Universal basic  
unit not included.



Curved blade disc,  
stainless steel, double-  
bladed, adjustable  
0-5 mm 561 000 0352\*



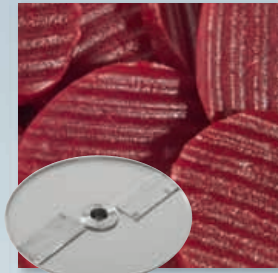
Curved blade disc,  
stainless steel, single-  
bladed, adjustable  
0-10 mm 103 275 000



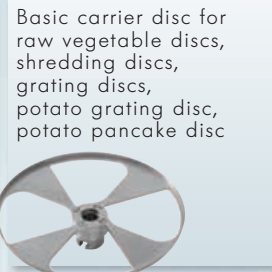
Crescent blade discs,  
stainless steel  
3 mm 561 000 0363  
4 mm 561 000 0360\*  
6 mm 561 000 0361



Strip cutting discs,  
stainless steel  
2 x 2 mm Juliennes 561 000 0362\*  
4 x 4 mm Juliennes 561 000 0364  
6 x 6 mm 561 000 0366  
8 x 8 mm 561 000 0368



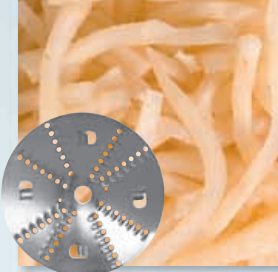
Crinkle cutting discs,  
stainless steel  
4 mm 561 000 0369  
6 mm 568 000 0367



Basic carrier disc,  
stainless steel  
568 000 0370\*



Raw vegetable discs, stain-  
less steel, hand sharpened  
2 mm 561 000 0380  
2.5 mm 561 000 0382  
3 mm 561 000 0371\*  
4 mm 561 000 0374



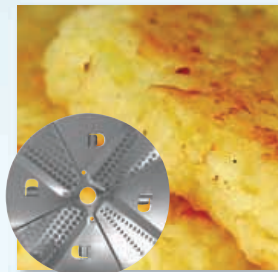
Shredding discs, stainless  
steel, hand sharpened  
6 mm 561 000 0372\*  
9 mm 561 000 0373



Grating discs,  
stainless steel  
2 mm 561 000 0381  
3 mm 561 000 0375\*  
4 mm 561 000 0378



Potato grating disc,  
stainless steel,  
crown-toothed  
561 000 0376



Potato pancake disc,  
stainless steel,  
partly crown-toothed,  
combination of 376/380  
561 000 0377



Dicer, complete  
4 x 4 x 5 mm 103 240 000  
5.5 x 5.5 x 5 mm 103 243 000  
8 x 8 x 10 mm 103 246 000  
11 x 11 x 10 mm 103 250 000  
16 x 16 x 10 mm 103 252 000  
22 x 22 x 10 mm 103 255 000

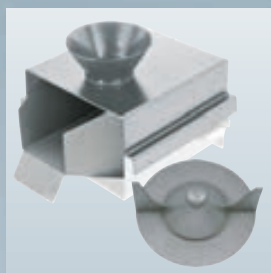


Multi disc rack, stainless  
steel, for 2 discs and  
7 exchange discs  
561 000 0190  
Disc rack, for 5 discs  
561 000 0191\*



Protective hand grip  
for dicer disc  
105 040 190

## SELECTION OF ACCESSORIES

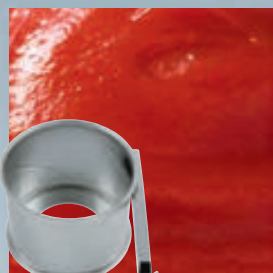


Straining hopper with flow sheet, stainless steel  
104 036 000

Attention: Universal basic unit not included.

Straining wing for cylinders stainless steel  
100, 200, 300

104 075 000



Straining cylinders, stainless steel  
1.5 mm 104 076 100  
3 mm 104 076 200



Pureeing cylinder, stainless steel  
104 076 300

Safety switch-off in accordance with EU standard

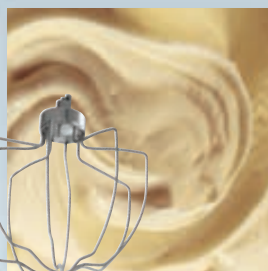


Planetary stirring, beating and kneading unit  
104 035 000\*

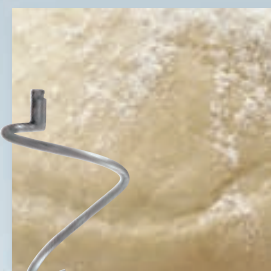
Composed of:  
planetary mixer head,  
stirring bowl 15 l,  
covering hood 15 l,  
beating whisk, stirring whisk  
and kneader



Beating whisk, stainless steel  
15 l 561 000 0232



Stirring whisk, stainless steel  
15 l 561 000 0242



Kneader, stainless steel  
15 l 561 000 0265



Meat and vegetable mincer 70 mm  
104 045 000\*

Composed of:  
mincer housing, worm,  
3-part cutting set made of  
stainless steel, L&W,  
perforated plate 4 mm,  
spacer ring, small meat tray  
and pusher.



Universal housing for strip cutter, steaker and meat tenderizer  
104 025 101

Composed of:  
stainless steel housing  
and coupling M 4.  
Attention: To be ordered  
together with strip cutter set  
and/or tenderizer/steaker  
set.

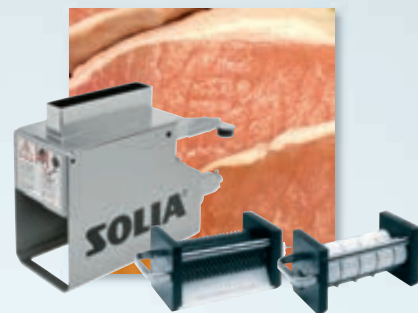
Safety switch-off in accordance with EU standard



Strip cutter set  
104 025 100

Composed of:  
lid complete incl. funnel,  
magnet holder and pusher.  
Attention: universal housing  
as well as the resp. inserts  
are not included in the  
delivery.

Cutting inserts,  
stainless steel  
3.3 mm 1500727  
5.0 mm 1500728  
6.6 mm 1500729  
9.9 mm 1500730  
19.8 mm 1500731



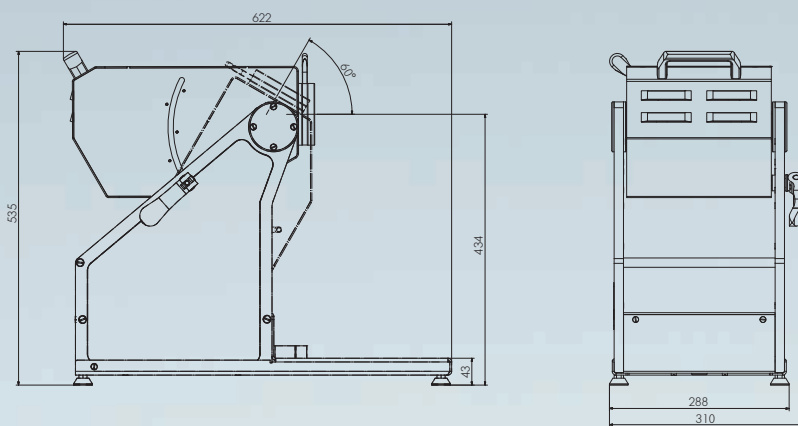
Steaker/meat tenderizer set  
104 027 100

Composed of:  
feed chute and magnet  
holder.  
Attention: universal housing  
as well as the resp. inserts  
are not included in the  
delivery.

Steaker insert 1500732  
Meat tenderizer insert 1500733

## TECHNICAL DATA

Power supply	400 V, 50 Hz 3 m cable with CEE plug
Output (kW)	0.5/0.7
Fuse protection (A)	16
Ingress protection	IP 54 (splash-proofed)
Infinitely variable speed control (rpm)	160/320
Dimensions (L x W x H)	310 x 622 x 535 mm
Weight (kg)	~ 40



M 4 Multi-purpose kitchen machine

## PROCESSING CAPACITY

Description	Use	Throughput**
Curved blade disc, single-bladed	Cutting of vegetables	50 - 200 kg/h
Curved blade disc, double-bladed	Cutting of soft vegetables	50 - 100 kg/h
Crescent blade discs, stainless steel	Cutting of boiled potatoes	80 - 150 kg/h
Shredding discs	Shredding of e.g. celery, radish, potatoes, carrots, gouda cheese	120 - 200 kg/h
Grating discs	Grating e.g. bread, nuts, almonds, chocolates, cheese	50 - 120 kg/h
Potato grating disc	Grating e.g. potatoes, parmesan cheese	50 kg/h
Potato pancake disc	Grating e.g. potatoes	50 kg/h
Dicer	Dicing of vegetables, fruits	120 - 200 kg/h

\*\*The throughputs are dependent on cutting thickness and product.

The figures shown here are for illustration only and may deviate from the actual design version. Technical alterations are reserved. For additional accessories please refer to our price list.

\*Items marked with an asterisk are part of the basic equipment.